

# ***SEA BORN***<sup>®</sup>

CENTER CONSOLES / BAY / OFFSHORE BOATS

# SEA BORN

## Center Consoles

LX26 Center Console.....	3
LX24 Center Console.....	5
LX22 Center Console.....	7
LX21 Center Console.....	9

## Bay Boats

FX25 Bay.....	11
FX24 Bay.....	13
FX22 Bay.....	15
FX21 Bay.....	17

## Offshore

SX281 Offshore.....	21
SX239 Offshore.....	23

Build Yours.....	24
Learn More.....	26



Composite Research, Inc.







*FAMILY. FISHING. FUN.*







## LX26 CENTER CONSOLE

The LX26 measuring 26'-6" is ready to serve as your centerpiece to life on the water. Built for the family who loves to fish and play, our yacht-certified center console exemplifies modern style and best-in-class value. Already a classic, you and your family will love the LX26 Center Console.

Length	26' 6"
Beam	116"
Max Horsepower	500
Approx Fuel Capacity	135 gal
Draft	20"
Deadrise	21°
Weight	5,500 lbs
Freeboard	25"
Max Persons	Yacht Certified



 **SUZUKI**  
**MARINE**

**SIMRAD**

Build Yours & Learn More Online at [www.SeaBornBoats.com](http://www.SeaBornBoats.com)







## LX24 CENTER CONSOLE

Our most popular center console, the LX24 measures 23' 9" gives ample room for up to nine of your closest family and friends while on the water. Large enough for sportfishing, yet still small enough for easy storage and trailering, the LX24 is built standard with bow and aft seating, high-tech multi-function console display, and in-console head making it our top-selling model in the series.

Length	23' 9"
Beam	102"
Max Horsepower	300
Approx Fuel Capacity	107 gal
Draft	14"
Deadrise	17°
Weight	2,600 lbs
Freeboard	25"
Max Persons	10



 **SUZUKI**  
**MARINE**

**SIMRAD**

Build Yours & Learn More Online at [www.SeaBornBoats.com](http://www.SeaBornBoats.com)







## LX22 CENTER CONSOLE

Embodying the modern elegant fishing machine, the ultra-family-friendly LX22 measures 21'-9" and is built to last using all-composite materials. Versatile and ready for both blue and coastal waters, the LX22's forward and aft seating along with considerable storage lends a true yacht-like experience and exceptional value.

Length	22' 5"
Beam	102"
Max Horsepower	250
Approx Fuel Capacity	91 gal
Draft	14"
Deadrise	17°
Weight	2,300 lbs
Freeboard	25"
Max Persons	8



Build Yours & Learn More Online at [www.SeaBornBoats.com](http://www.SeaBornBoats.com)



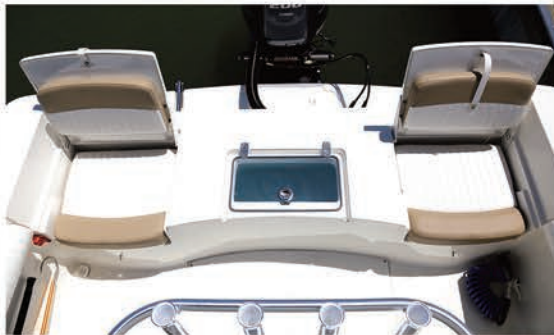




## LX21 CENTER CONSOLE

Called the “Fun Starter”, the LX21 is a great center console for first-time boaters or the seasoned pro. Measuring 20’-6” you and your crew will enjoy the flexibility of fishing, fun-time cruises, and lazily lounging at the sandbar. Nicely equipped with dozens of standard features, the LX21 is a great mix of affordability and value.

Length	20’ 6”
Beam	102”
Max Horsepower	200
Approx Fuel Capacity	68 gal
Draft	13”
Deadrise	17°
Weight	2,100 lbs
Freeboard	24”
Max Persons	7



Build Yours & Learn More Online at [www.SeaBornBoats.com](http://www.SeaBornBoats.com)







## FX25 BAY

The flagship of our top-reviewed bay boat lineup, the FX25 turns heads as one of our most sought-after models for the serious angler. Built with a stable 105" beam and single-stepped hull to improve performance, the FX25's sportfish-style transom and large forward casting deck makes it a true hybrid able to comfortably run inshore or offshore.

Length	24' 11"
Beam	105"
Max Horsepower	400 (v6)
Approx Fuel Capacity	68 gal
Draft	13"
Deadrise	17°
Weight	2,600 lbs
Freeboard	22"
Max Persons	12



Build Yours & Learn More Online at [www.SeaBornBoats.com](http://www.SeaBornBoats.com)







## FX24 BAY

The mid-sized model in our FX series of top-quality bay boats, the 24' fills the need of those seeking a bit more footage, without sacrificing easy storage and trailering. From bow to stern, the FX24 packs in the popular features including a large-forward casting deck, full-size folding seats, and a performance double-stepped hull.

Length	23' 9"
Beam	102"
Max Horsepower	300
Approx Fuel Capacity	68 gal
Draft	13"
Deadrise	17°
Weight	2,200 lbs
Freeboard	20"
Max Persons	9



Build Yours & Learn More Online at [www.SeaBornBoats.com](http://www.SeaBornBoats.com)







## FX22 BAY

It's no surprise that the FX22 is our top-reviewed and most-popular bay boat. Affordable, roomy, and stylish the FX22 has been called, "one of the biggest 22's out there" by Saltwater Sportsman magazine. Fishing approved yet family friendly, the FX22 is an excellent bay cruiser and sandbar lounge.

Length	21' 9"
Beam	102"
Max Horsepower	250
Approx Fuel Capacity	50 gal
Draft	13"
Deadrise	17°
Weight	2,000 lbs
Freeboard	20"
Max Persons	7



Build Yours & Learn More Online at [www.SeaBornBoats.com](http://www.SeaBornBoats.com)







## FX21 BAY

The Sea Born FX21 Bay is an exceptional value for the buyer looking for fishing friendly features as well as a family cruiser in an affordable package. Our 21-foot bay boat offers exceptional performance and fuel economy with over 39+ standard features which includes two aft, full-sized, folding seats for improved passenger comfort.

Length	20' 5"
Beam	98"
Max Horsepower	150
Approx Fuel Capacity	42 gal
Draft	12"
Deadrise	17°
Weight	1,850 lbs
Freeboard	20"
Max Persons	6



Build Yours & Learn More Online at [www.SeaBornBoats.com](http://www.SeaBornBoats.com)







## SX281 OFFSHORE

From sport fishing to island hopping, the Sea Born SX281 Offshore is our largest, most-luxurious model ever. Yacht certified and measuring 27'-9", the 281 can own the blue water with luxury and style as she's adorned with over one-hundred standard features. Big, beautiful, and ready for your life on the water, the SX281 Offshore is already a timeless classic.

Length	27' 9"
Beam	115"
Max Horsepower	600
Approx Fuel Capacity	187 gal
Draft	20"
Deadrise	19°
Weight	5,800 lbs
Freeboard	32"
Yacht Certified	



Build Yours & Learn More Online at [www.SeaBornBoats.com](http://www.SeaBornBoats.com)



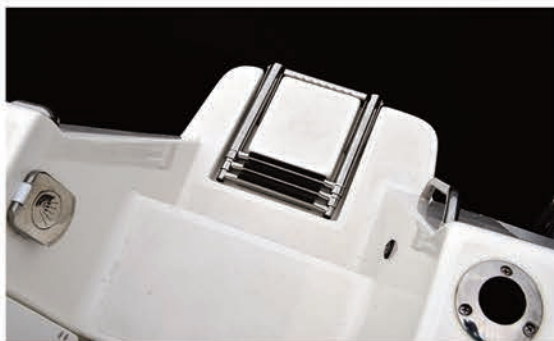




## ***SX239 OFFSHORE***

Elegant and modern, the SX239 is ready for blue-water glory. Built in two distinct configurations the “Classic” offers forward seating for friends or family whereas the “Open” gives the fishing fanatic greater water access from the bow. We’ve added a standard windlass and rear-transom door making the 239 a superior value and obvious choice for offshore adventurers.

Length	23' 3"
Beam	107"
Max Horsepower	300
Approx Fuel Capacity	100 gal
Draft	18"
Deadrise	19°
Weight	3,850 lbs
Freeboard	30"
Max Persons	10



Build Yours & Learn More Online at [www.SeaBornBoats.com](http://www.SeaBornBoats.com)



## ***BUILD YOURS***

### Ready to Own a Sea Born?

Visit our online boat builder. Pick your favorite boat. Select a hull and interior color and then choose your trim package at <http://www.SeaBornBoats.com/build-your-sea-born/>

#### Available Hull Colors



#### Available Upholstery Colors



Composite Research, Inc.









## LEARN MORE

### Your Local Dealer

To purchase a new Sea Born simply visit our online dealer locator at <http://www.SeaBornBoats.com/dealers/>

### Support

We want you to love your Sea Born, so when you need support visit our online knowledge base found at <http://www.SeaBornBoats.com/support/>

### Clothing & Gear

You've got the boat, now get the gear at our online store. <http://www.SeaBornBoats.com/store/>

### Web Site

Visit the Sea Born web site to build and learn more about our bay, center console, & offshore boats. <http://www.SeaBornBoats.com/>



Composite Research, Inc.











We consistently strive to improve our products which may result in changes not limited to specifications, models, features, equipment, prices, and may from time to time include discontinuing models without notice and without incurring any obligation. Buyers should confirm all specifications with their local dealer prior to purchase as some photographs herein may display optional equipment or third-party aftermarket products. Sea Born, images, and logos are property of Composite Research, Inc. © 2020 all rights reserved. Revised Sept,2020.

Composite Research, Inc. | 6131 Sundance Rd. Blackshear, GA. 31516 | 912-449-0033